

Elcometer 5100 Payne Permeability Cups

Can be used in accordance with:
ASTM D1653, ASTM E96, ISO 7783-1, ISO 7783-2



The Elcometer 5100 Payne Permeability Cups are made entirely from anodised aluminium and are used to determine the permeability of films of paints, varnish, plastic, cellophane, etc.

The water evaporates or is absorbed and, after a certain time, the weight change relative to the film thickness is calculated, indicating the degree of permeability or permeance.

Technical Specifications

Part Number	Description	Area cm ²	Volume cm ³
K0005100M201	Elcometer 5100/1 Payne Permeability Cup	10	15
K0005100M202	Elcometer 5100/2 Payne Permeability Cup	30	50
K0005100M203	Elcometer 5100/3 Payne Permeability Cup	30	75

Packing List

Elcometer 5100 Payne Permeability Cup

Storage Case

Operating Instructions

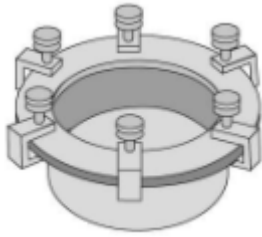
Accessories

Part Number	Description	Chart Dimensions mm ²	Quantity per Box
K0004695M112	Leneta Chart RP-1K	219 x 286	250

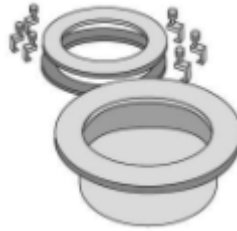
For use with Elcometer 8720 compact balance.



How to use Payne Permeability Cups



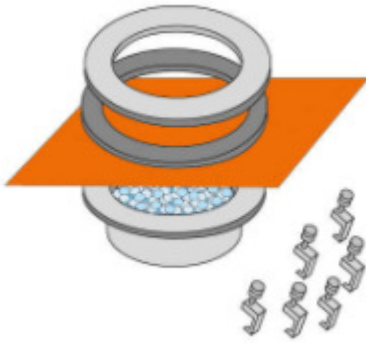
Prepare the film to be tested using a film applicator and suitable test chart.



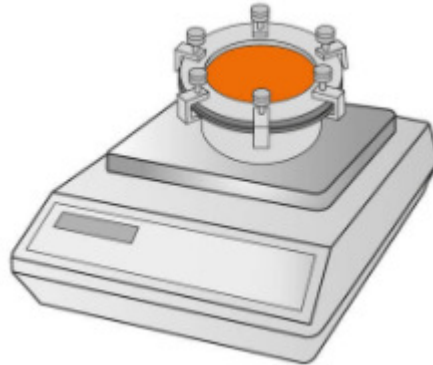
Disassemble the permeability cup



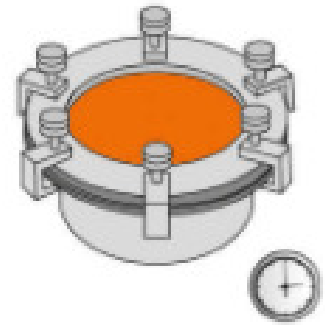
Fill with required liquid (typically water) or dry desiccant (absorbent).



Place the film on to the cup and reassemble making sure the gasket is fitted.



Weigh the prepared permeability cup and record the result (in grams).



Leave for appropriate time, re-weigh, calculate the change in mass (Δm) & water vapour transmission rate.